





Who we are

East West Corporation Limited, is a privately owned business entity in Hong Kong, with offices in China and South America. With the core business being sourcing, design and development of consumer products, our business model is based on providing a complete set of services, which include and are not limited to distribution, shipping, financing.

We are embarking on a strong base in some countries in South America and aim to deliver a high standard of service to our clients in these regions.

Established since 1968, EWCL employs a small group of staff in their Hong Kong office with customer representatives in different countries.

A trading company, exporter, importer- some of the various names related to the trading business with China being at its core, we consider EWCL as an “integrated service provider” for consumer goods trade -with more product ranges being constantly added to expand our business and markets.

Factory Background

- ❑ Established in 2008
- ❑ Manufacturing footwear in China
- ❑ Exporting directly to more than 25 countries
- ❑ Manufactures footwear for the whole family with products ranging from gents' to ladies and childrens.

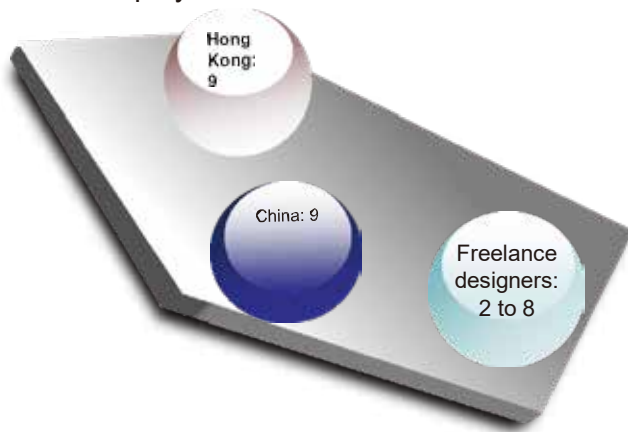
System Certifications & Social Compliance

- ❑ BSCI Audit

Benefits & Advantages

- ❑ In house testing facilities with modern testing machinery.
- ❑ In house design department with 4 full time designers.
- ❑ Well trained QC team existing from 19 people.
- ❑ In house sample room with latest machinery with a capacity of 3500 pairs.per season with 28 workers
- ❑ Good supply chain network with more than 60% of the components coming from subsidiary companies.

Number of Employees:



We are embarking on a strong base in some countries in Mexico and South America and aim to deliver a high standard of service products to our clients in these regions. Established since 1968, EWCL employs staff in their Hong Kong office with customer representatives in different countries. A trading company, exporter, importer - some of the various names related to the trading business with China being at its core, we consider EWCL as an "integrated service provider" for consumer goods trade-with more product ranges being constantly added to expand our business and markets.

Jinjiang office



Sample room



Product Portfolio

■ Back to school



■ Children sneakers



■ Indoor Slippers



■ Shoes



■ Sport Shoes



■ Casual Shoes



■ Hiking Shoes



■ Work boots



■ Vulcanized Shoes



■ Badminton Shoes



■ Injection Shoes





Doing business with the world since 1968

[
),





Doing business with the world since 1968



L.A. GEAR®



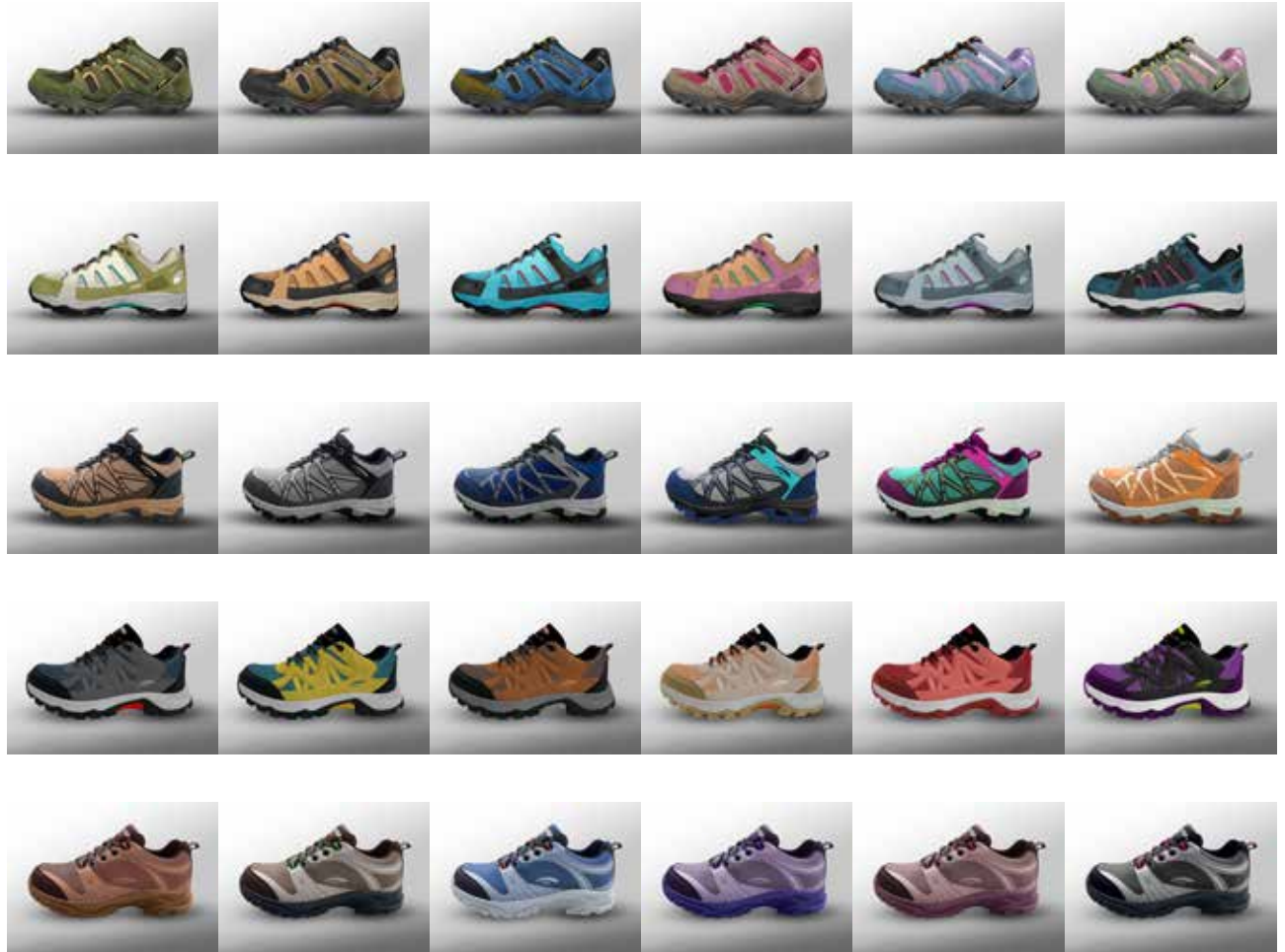


















Currently we are focusing our attention to the development & sale of Toys ; Ladies Underwear ; and Footwear.

1

Toys, this is under International Sourcing (Asia) Ltd as a Walmart vendor no. 36130522

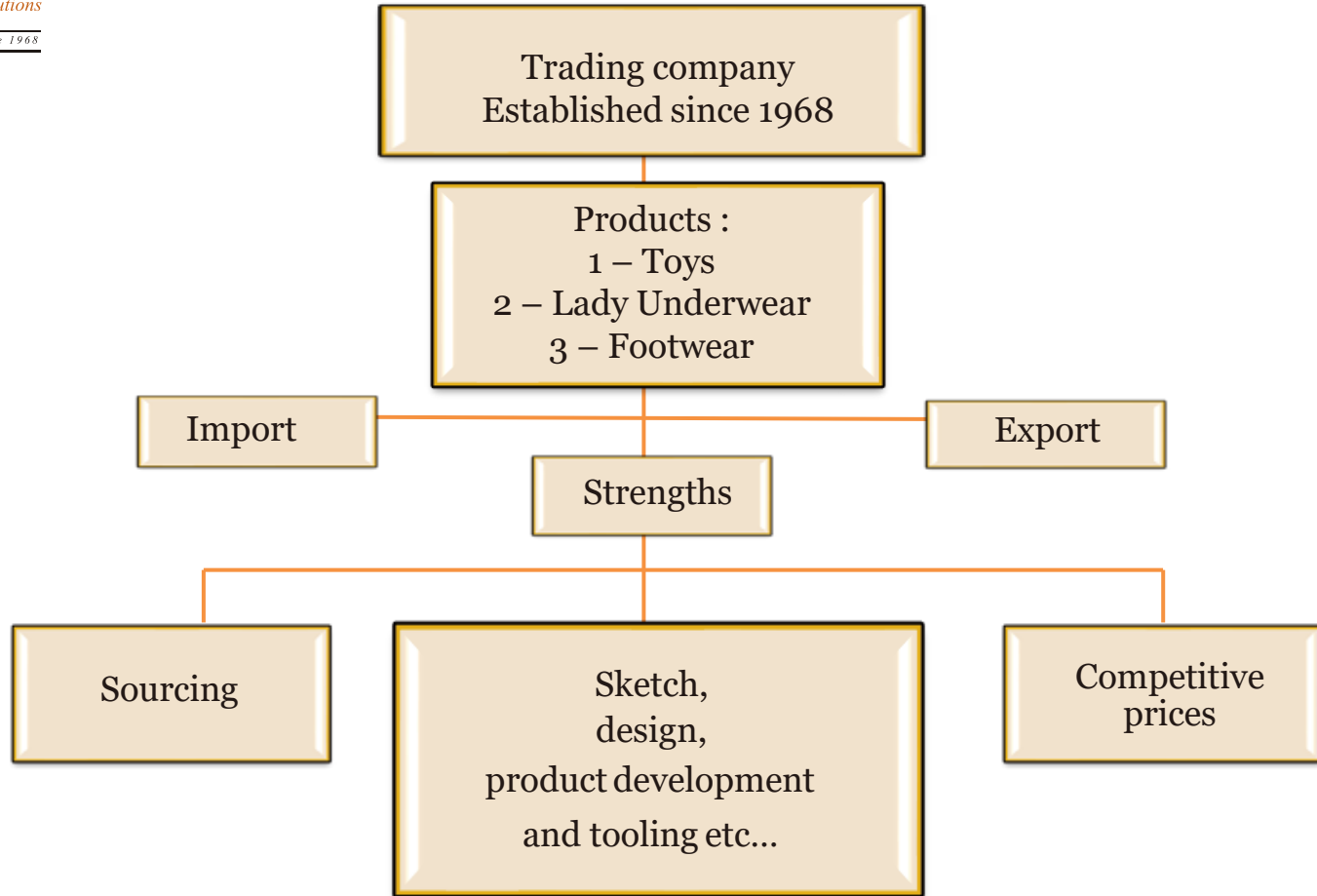
2

Footwear

3

Ladies Underwear





Category : Footwear



THANKS

Do you have any questions?

We have our own sample room

Please feel free to contact us for samples or
quotation via email : george@isalmex.com

Address: Unit 404 Grandmark, No.10 Granville Road,
Tsimshatsui, Kowloon, Hong Kong
Tel : (852) 2424 8088 Fax : (852) 2494 9007

